

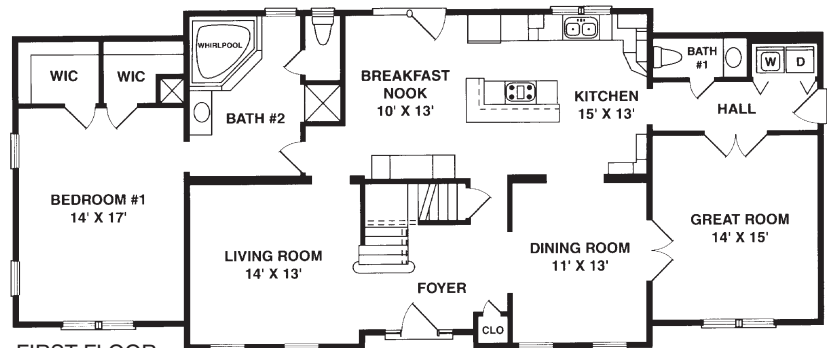
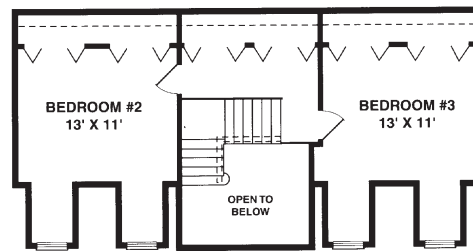
CAPE



The popular Cape has come of age as these uniquely styled homes depict. And when you consider the future expandability of the upper floor, the Cape is a natural choice for the savvy home buyer. RBA Capes combine the best in practical design, charming aesthetics and updated styling. The Cape Avon has an impressive entry, traditional dormers and more than 1700 sq. ft. on the first floor alone.

THE CAPE AVON

PROPOSED SECOND FLOOR



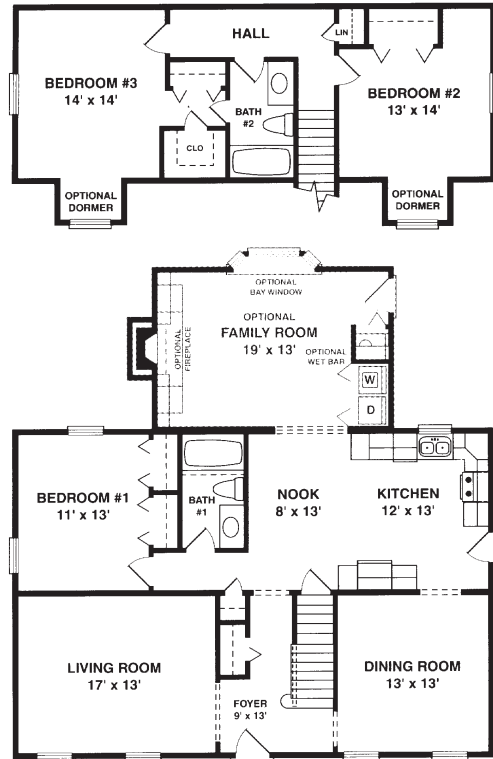
FIRST FLOOR
1764 SQ. FT.



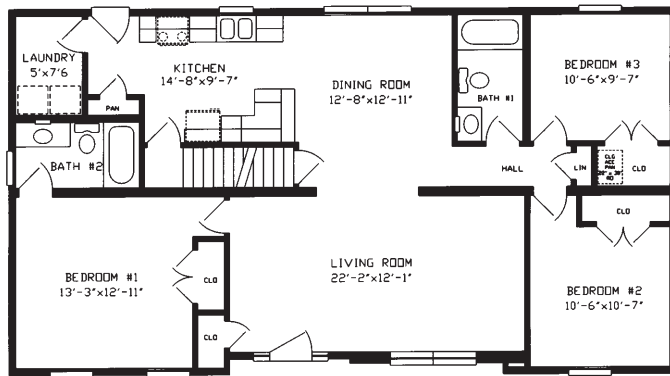
THE CAPE SUPERIOR



PROPOSED SECOND FLOOR



FIRST FLOOR
1120 SQ. FT.

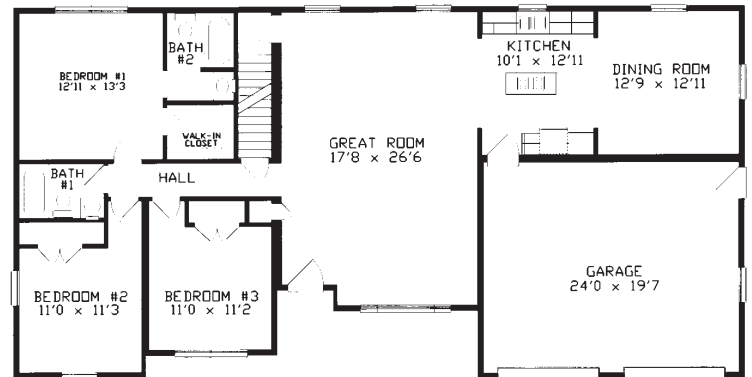


1375 SQ. FT.

THE FREDERICK



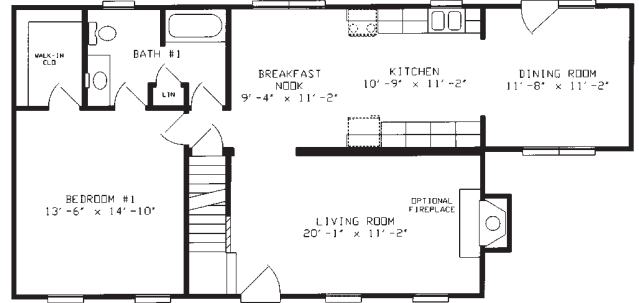
THE LEESBURG



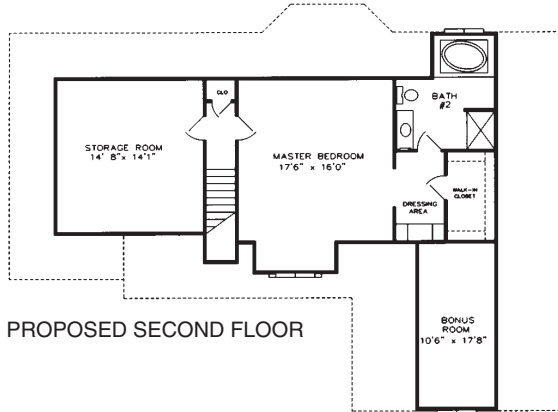
1600 SQ. FT.



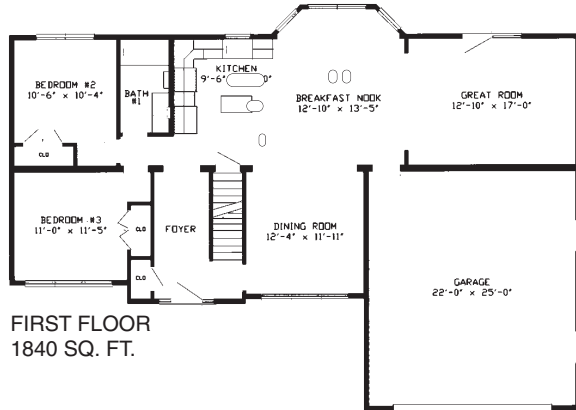
THE CAPE CAROLINE



1041 SQ. FT.



PROPOSED SECOND FLOOR

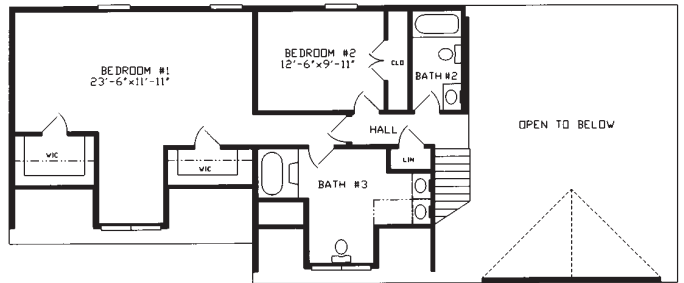


FIRST FLOOR
1840 SQ. FT.

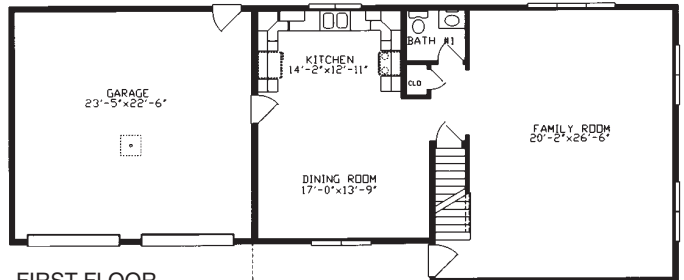
THE ALEXANDRIA



PROPOSED SECOND FLOOR

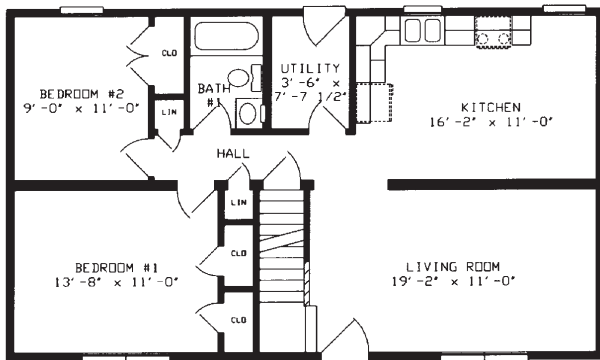
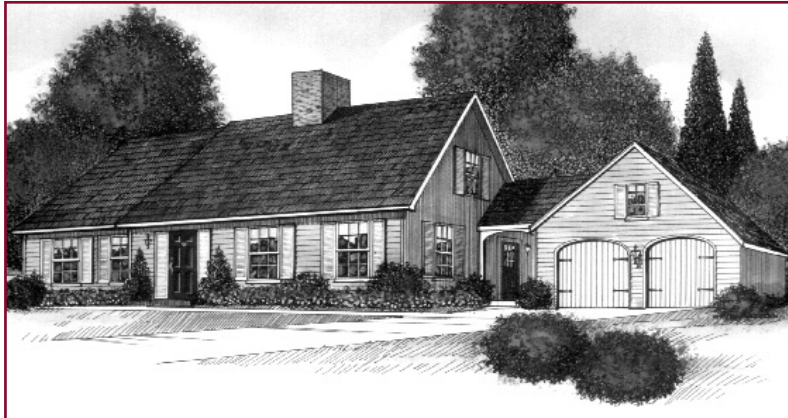


THE ROANOKE

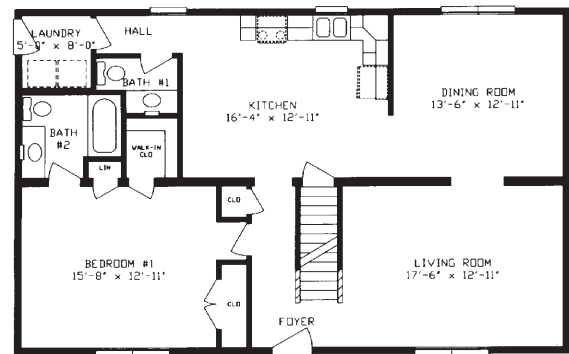


FIRST FLOOR
2067 SQ. FT.

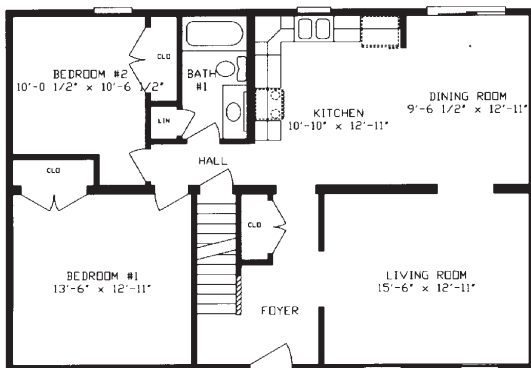
THE COUNTRY CAPE



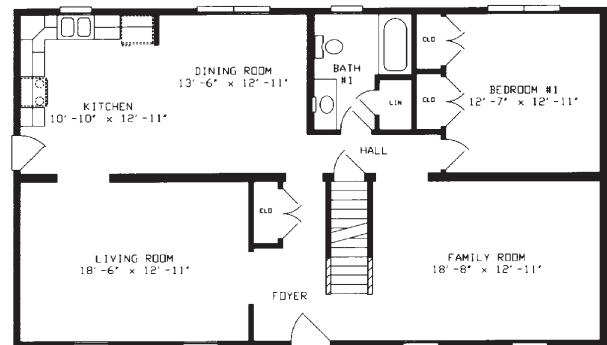
CAPE VIEW
960 SQ. FT.



CAPE VICTORIA
1232 SQ. FT.



CAPE ROSE
1100 SQ. FT.



CAPE MARIE
1344 SQ. FT.